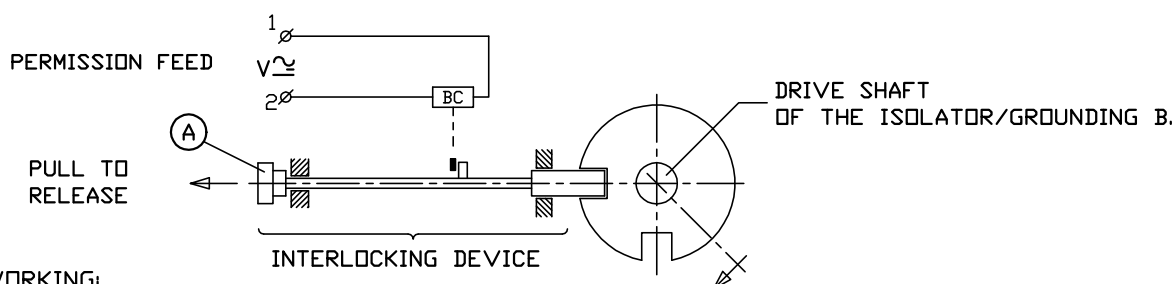


ELECTROMECHANIC INTERLOCKING DEVICE OF MANUAL
OPERATION FOR OP.MECHANISM CS100 SERIES AND OF
MANUAL OPERATION OF GROUNDING BLADES FOR MOTOR
OPERATING MECHANISM CS600 SERIES

THIS IS A DEVICE WHICH PREVENTS THE EXECUTION OF THE OPERATION, LOCKING
THE OPERATING MECHANISM IN THE EXTREME POSITIONS UNLESS THERE IS AN
ELECTRIC PERMISSION

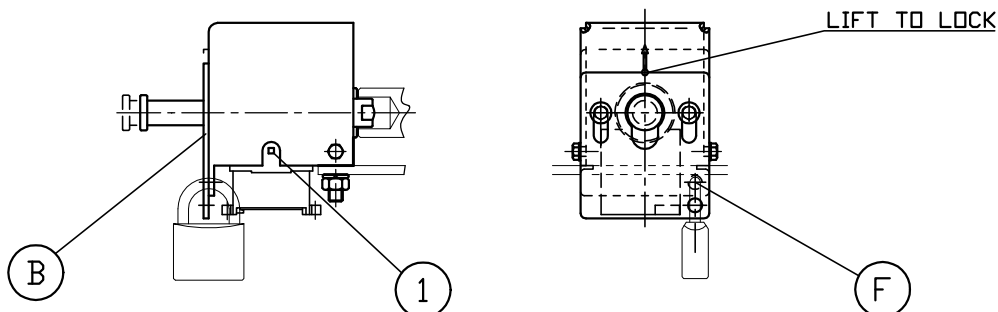
PRINCIPLE DRAWING



WORKING:

IF THERE IS VOLTAGE AT TERMINAL BLOCKS 1 AND 2, THE RELAY "BC"
GETS ENERGIZED, AND THIS CONSENTS THE COMPLETE TRAVEL OF THE STUD WHICH
CONSENTS THE COMPLETE TRAVEL OF THE DRIVE SHAFT OF THE ISOLATOR
OR GROUNDING BLADE.

IN ORDER TO PAD-LOCK THE DEVICE, LIFT UP THE PLATE "B" AND INTRODUCE
ONE PAD-LOCK IN THE HOLE "F".



EMERGENCY RELEASE

NB: THIS OPERATION IS TO BE PERFORMED ONLY IN CASE OF EXTREME NECESSITY AND
BY PERSONNEL WELL INFORMED ABOUT THE OPERATION THAT HE IS PERFORMING; IN
FACT THE ELECTRIC LOCKS, EVENTUALLY EXISTING, ARE MADE INEFFICIENT.
THE FIRM "ALSTHOM" DECLINES EVERY RESPONSIBILITY FOR DAMAGES TO THINGS
OR PERSONS, ARISING FROM SUCH OPERATION, THAT, ANYWAY, WE ADVISE AGAINST.

DESCRIPTION OF THE OPERATION:

OPERATE ON THE MOVING ANCHOR "1" OF THE RELAY BY A LITTLE
SCREWDRIVER IN ORDER TO UNLOCK THE ELECTROMECHANICAL DEVICE.
AFTER THE EMERGENCY RELEASE, VERIFY THE LOCK IS WORKING

ATTENTION:

WHILE PUTTING THE ISOLATOR INTO SERVICE DO NOT USE THE EMERGENCY RELEASE
BUT FEED THE LOCK BY AUXILIARY VOLTAGE.

A	EMISSION	11-01-02	DALLE VEDOVE	PANIGHEL
REVISION	DESCRIPTION	DATE	COMPILED	APPROVED